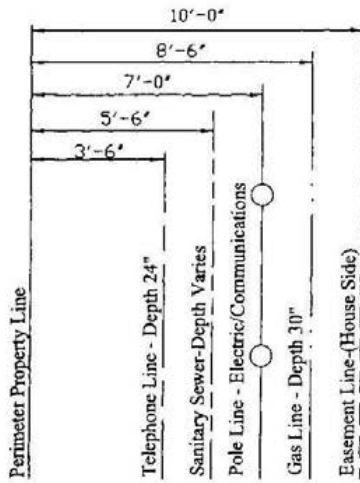
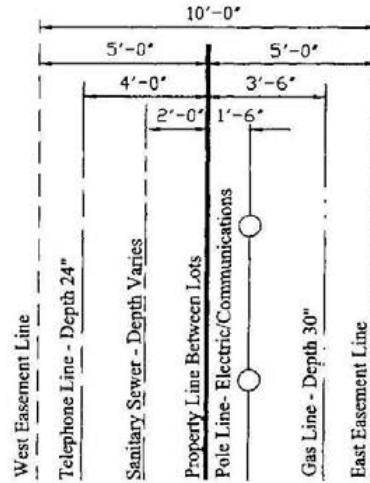


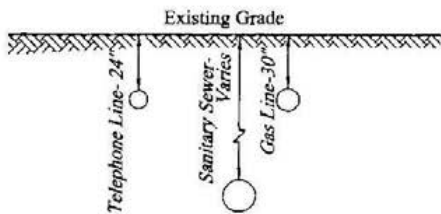
TYPICAL UTILITY LOCATIONS IN 10-FOOT-WIDE  
RESIDENTIAL EASEMENT



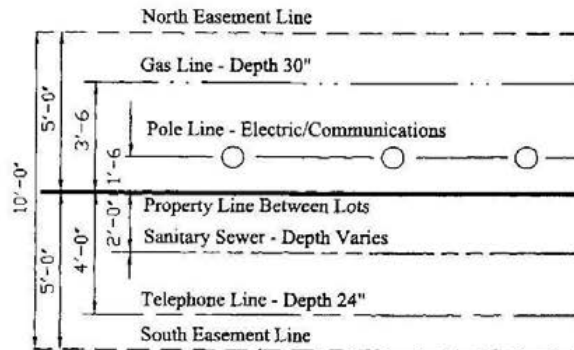
PERIMETER EASEMENT



BACK-TO-BACK EASEMENT



TYPICAL INSTALLATION  
DEPTHS

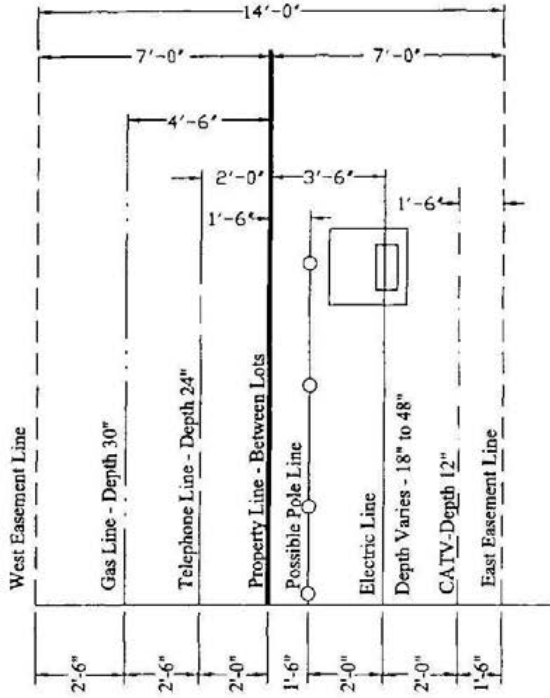


BACK TO BACK EASEMENT

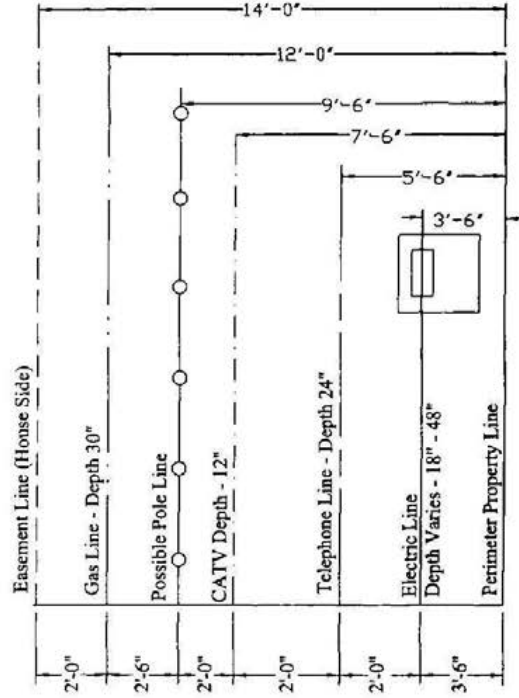
NOTES:

- (1) Utilities are normally installed as shown but depth may vary due to fill or cut by others.
- (2) Maintain minimum 4" clearance between utility lines extending from easement to house/building.
- (3) Flexible base shall be 8" minimum hot mix asphaltic concrete (hmac).

**TYPICAL UTILITY LOCATIONS IN 14-FOOT-WIDE  
RESIDENTIAL BACKLOT EASEMENT  
(NO BACKLOT SEWER)**



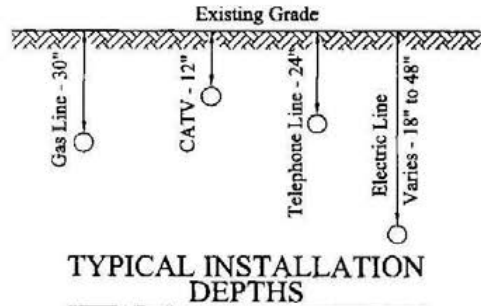
**BACK-TO-BACK EASEMENT**



**PERIMETER EASEMENT**

**NOTES:**

- (1) Utilities are normally installed as shown, but depth may vary due to fill or cut by others.
- (2) Maintain minimum 4" clearance between all utility lines extending from easement to house/building.
- (3) Always exercise extreme caution when digging in utility easements and on or across customer's property, because service lines extend from easement to house.
- (4) 10' Utility Easements may be granted if approved by the Utilities and City Council.



**TYPICAL INSTALLATION  
DEPTHS**