

# Street Sweeping - Week 2 November - February

City of Rosenberg, Texas

## Street Sweeping Week 2

### Base Zones

 Zone 3

 Zone 4


### Alternate Zones

 Zone 7

 Zone 8

### Basemap Features

 Interstate

 US Highway


 State Highway

 Public Road

 Private Road

 Railroad

 Brazos River

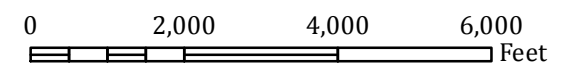
 Rosenberg City Limits

 Rosenberg ETJ



Scale:  
1:30,000

or  
1 Inch = 2,500 Feet



Created by: City of Rosenberg GIS - Cory Vardaman  
Date Created: May 11, 2017  
Original Size: 11" x 17"  
R:\Maps\Custom\Public\_Works\2017\StreetSweeping\_AltZones\_11x17.mxd

This product is for informational purposes and may not have been prepared for or be suitable for legal, engineering, or surveying purposes. It does not represent an on-the-ground survey and represents only the approximate relative location of geographic features.

