



HAPPY
HOLIDAYS

Rosenberg
TEXAS
Insider
DECEMBER 2022/JANUARY 2023

Holiday Decorating Safety Tips

Twinkly lights, candles, holiday trees and plants, ornaments and other decorations are an important part of holiday celebrations. Besides being festive and fun, the decorations bring out happiness, joy, cheer and special memories. But, don't let the merriment turn south by not being safe! Follow these safety and prevention tips to have a joyous holiday season!

TREE SAFETY:

- When purchasing a live tree, check for freshness. The needles should be hard to pull off, and should not break when you bend them. When you tap the tree on the ground, only a few needles should fall off. Cut a few inches off the bottom of the trunk before putting it in the stand, and be sure to keep the stand filled with water.
- If you have an artificial tree, make sure it's labeled "Fire Resistant".
- When setting up a tree at home, place it away from fireplaces or portable heaters. Do not block walkways with the tree.

HOLIDAY LIGHTS SAFETY:

- Check all lights before hanging them on a tree or in your home, even if you have just purchased them. Make sure all the bulbs work and that there are no frayed wires, broken sockets or loose connections.
- Before using lights outdoors, check labels to be sure they have been certified for outdoor use. To hold lights in place, string them through hooks or insulated staples, not nails or tacks. Never pull or tug lights to remove them. Plug all outdoor electric decorations into circuits with ground fault circuit interrupters to avoid potential shocks.

DECORATIONS:

- When lighting candles, remove flammable materials from the area and place the candles where they will not be knocked over. Never leave a burning candle unattended. Do not use lighted candles on a tree or near other evergreens.
- Remove all wrapping paper, bags, paper, ribbons, and bows from tree and fireplace areas after gifts are opened. These items can pose suffocation and choking hazards to a small child or can cause a fire if near flame.
- Keep potentially poisonous holiday plant decorations, including mistletoe berries, Jerusalem cherry, and holly berry, away from children and pets.

Winter Weather Safety Tips

As winter approaches, it's time to make sure you are ready for colder temperatures. Risks such as hypothermia, frostbite and carbon monoxide poisoning are common winter hazards. Winter precipitation can bring freezing rain, sleet, snow, ice and cold temperatures. This can also cause interruptions such as power outages, water supply disruptions and dangerous road conditions. The City's Emergency Management Team wants you to be prepared! In the home, test your heater to ensure it's operational. If using a fireplace, make sure it vents outside. If you smell gas, leave the area immediately and call 911 to report the odor. Test your smoke and carbon monoxide detectors, and replace the batteries or fix them if needed. Remember you cannot see or smell carbon monoxide, so a detector can save your life! Make sure to have an emergency supply kit to last at least 72 hours. Have backup power ready for essential needs. Outside the home: Watch for signs of frostbite and hypothermia. Limit your time outside. Keep trees trimmed as ice can cause the branches to collapse and destroy roofs and power lines. Do not attempt to trim limbs that are already close to power lines. Contact CenterPoint Energy for assistance in this situation. Check on family members, neighbors, and at-risk individuals when conditions are bad or utilities are out. In the car: Drive carefully over bridges and overpasses. Have an emergency preparedness kit in your car in case you get stranded. Check present and expected weather conditions before traveling. Always play it safe when winter weather strikes. During a winter storm, avoid traveling unless absolutely necessary. For more preparedness information, visit the website at rosenbergtx.gov.



OUR GOVERNMENT

The city of Rosenberg operates in a Council-Manager form of government in which the City Council sets the policy and overall direction for the City, and appoints a professional City Manager and other key officials to oversee the City's daily operations.

CITY COUNCIL

- Mayor: Kevin Raines
- At-Large 1: Marc Morales
- At-Large 2: Alicia Casias
- District 1: Keith Parker
- District 2: Susan Euton (Mayor ProTem)
- District 3: Hector Trevino
- District 4: George Zepeda

CITY MANAGER

John Maresh

MEETINGS

City Council meets regularly in public session the first, third and fourth Tuesday of each month at 6:30 p.m. The meeting agendas are available on the City's website. Council meetings may also be viewed live on Comcast Channel 16, rosenbergtx.gov/TV or on YouTube @RosenbergTXGov

MISSION STATEMENT

To anticipate community needs and deliver exceptional service, and to cultivate an enhanced quality of life through leadership, innovation and cooperative partnerships.

NUMBERS TO KNOW

- Animal Control
↪ 832-595-3490
- Citizen Relations
↪ 832-595-3301
- Customer Service (Utilities)
↪ 832-595-3400
- Police Dispatch (Non-Emergency)
↪ 832-595-3700
- GFL Environmental (Solid Waste)
↪ 832-271-5187
↪ cityofrosenberg@gflenv.com



SOLID WASTE REMINDERS

Solid waste service now includes trash pick-up twice weekly in addition to recycling, green waste, and bulky waste pickup. **FRIENDLY REMINDER:** Per City Ordinance, you must remove your cart after each service date. You cannot leave your cart at the curb all week. Solid Waste carts should be placed out and removed on Mondays/Thursdays or Tuesdays/Fridays and only your recycle cart should be at the curb on Wednesdays. Customers may not place carts in the street right-of-way for collection earlier than 12 noon the day before collection and no later than 7 a.m. the day of collection. Emptied carts must be removed from the street right-of-way no later than 8 a.m. the morning following collection. Allow 3 feet of distance between the carts and any other objects such as mailboxes, vehicles, fences, etc. to facilitate automated pickup. **PLEASE NOTE: You can be cited and fined for failing to remove your poly carts properly.**

MONDAY/THURSDAY OR TUESDAY/FRIDAY SOLID WASTE, GREEN WASTE & BULKY WASTE

Regular household trash solid waste pick-ups on Monday/Thursday or Tuesday/Friday: All items should be inside of cart with the lid closed. Do not overfill and do not place trash bags on top of the lid or on the ground.

Green waste pick-up on Monday or Tuesday: Grass clippings, tree trimmings or other yard waste. 15 or less bags or bundles weighing less than 50 lbs. No large timbers or fence pickets. No limbs or brush larger than 6" in diameter. Limbs must be bundled in 4ft. lengths. Do not place green waste in the trash or recycle poly carts.

Bulky waste pick-up on Monday or Tuesday: General household items such as appliances and furniture. Up to 5 cubic yards or less per collection. No construction debris, hazardous waste or dead animals. Refrigerant, freon and doors must be removed from refrigerators and freezers and must be tagged by a professional.

WEDNESDAY - RECYCLING

Household recycling: Items should be placed loosely in the cart and not bagged. See the full list of acceptable items by visiting rosenbergtx.gov/trash.

NEED ASSISTANCE?

Have a missed pick up, need a new cart or repairs? Contact GFL directly at 832-271-5187 or via email at cityofrosenberg@gflenv.com. If that service is unsatisfactory, call Customer Service at 832-595-3400 or visit rosenbergtx.gov/trash.



SOLID WASTE HOLIDAY SCHEDULE

Residential solid waste services will not be affected for the Christmas or New Year's Day holidays. However, GFL customer service offices will be closed on Monday, Dec. 26th in observance of Christmas and Monday, Jan. 2nd in observance of New Year's Day.

WATER DISINFECTANT CONVERSION

The City of Rosenberg public water system, (PWS) ID # 0790003, will temporarily convert the disinfectant used in the distribution system from chloramine to free chlorine. The conversion will begin on December 5, 2022, and continue through December 19, 2022. During this period, you may experience taste and odor changes associated with this type of temporary disinfectant conversion. **For more information on the temporary switch, please visit rosenbergtx.gov or call Water Utilities at 832-595-3590.**

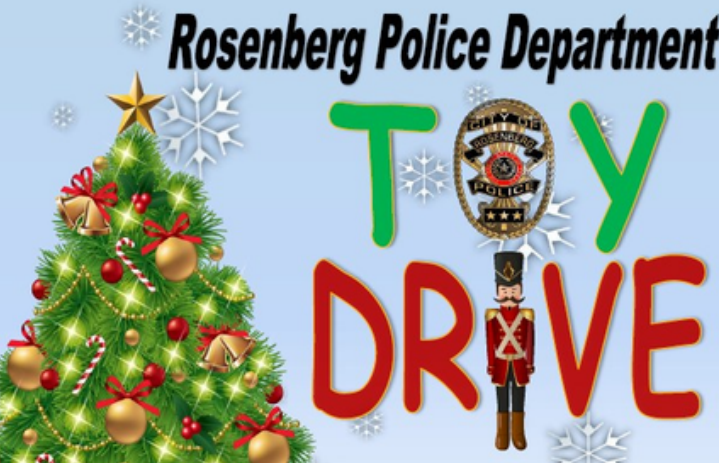
MEET



Pena is a sweet and loving 1-year-old boy that gets very excited when he meets new humans! He's got a playful side and loves to play ball. He knows commands such as sit and shake and has a beautiful coat that feels just like a soft sherpa blanket. He's ready to warm your heart this holiday season!



ROSENBERG ANIMAL CONTROL & SHELTER 832-595-3490



It's that time of year again! The Rosenberg Police Department is collecting toys for their annual toy drive! You can drop off new and unwrapped toys at the Rosenberg Police Department (2120 4th Street), the substation (24810 Commercial Drive) or on Saturday, Dec. 10 at Seabourne Creek Regional Sports Complex as we play a softball game against Rosenberg Fire Department. Your ticket to watch the game is a toy donation! →

WATCH AS ROSENBERG'S FINEST BATTLE IT OUT

2022 #RTOWN HEROES

SOFTBALL GAME

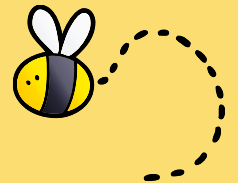
ROSENBERG POLICE DEPARTMENT vs ROSENBERG FIRE DEPARTMENT

TOY DRIVE BENEFITING LOCAL FAMILIES
PLEASE BRING A NEW UNWRAPPED TOY TO FILL OUR POLICE HUMMER

Dec. 10	Seabourne Creek Regional Sports Complex Field 5	GATES OPEN 11 A.M.
3701 FOUNTAINS DRIVE, ROSENBERG, TX 77471		



ROSENBERG DEVELOPMENT CORPORATION



#Rtown is buzzing with new development!

WHAT'S BEING BUILT THERE?



FORT BEND COUNTY EPICENTER
28505 Southwest Freeway



JIFFY LUBE
6521 Reading Road



TEXAS DEPARTMENT OF PUBLIC SAFETY MEGA CENTER
27750 Southwest Freeway



CENTERPOINT ENERGY SERVICE CENTER
935 Highway 90A



FOLLOW US ON SOCIAL MEDIA



@ROSENBERGTXGOV

Publication comments or topic ideas are welcome.

CONTACT US:

communications@rosenbergtx.gov
832-595-3301 *ask for Communications

SIGN-UP FOR CITY ALERTS:

rosenbergtx.gov/alerts

UPCOMING MEETINGS AND EVENTS

Visit rosenbergtx.gov to confirm meetings and agendas, view public notices, see more information on events and more!

12/3/2022	Hometown Holiday Festival (Downtown Rosenberg) 12-8 p.m.
12/6/2022	City Council Meeting - 6:30 p.m.
12/10/2022	#RTown Heroes Softball Game (Seabourne Creek Sports Complex) 11 a.m.
12/20/2022	City Council Meeting - 6:30 p.m.
12/23/2022	City Closed for Christmas Holiday
12/26/2022	City Closed for Christmas Holiday
12/27/2022	City Council Workshop Meeting Canceled
1/2/2023	City Closed for New Year's Holiday
1/3/2023	City Council Meeting - 6:30 p.m.* *meeting subject to cancellation. See 12/6/2022 Council Agenda for details.
1/16/2023	City Closed for Martin Luther King Jr. Day
1/17/2023	City Council Meeting - 6:30 p.m.
1/24/2023	City Council Workshop Meeting - 6:30 p.m.

