

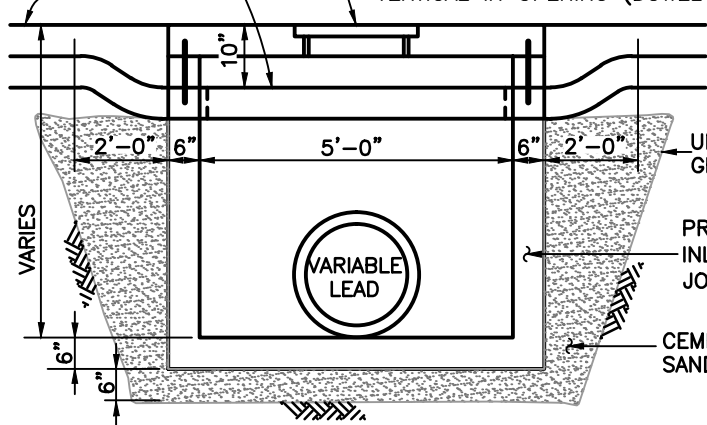
NOTE:
 REAR PAD 5" THICK CONCRETE WITH #3 BARS 12" O.C.E.W.
 AND 4"x12" TOE WALL ON ALL THREE SIDES

LIMITS OF DEPRESSED
 PAVEMENT SURFACE

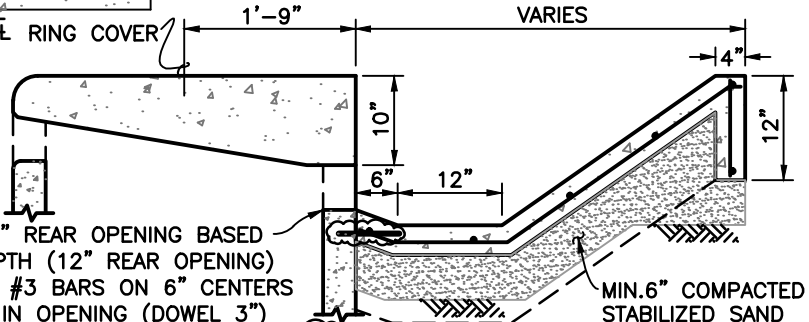
24"DIA. CAST IRON RING & COVER
 LABELED "CITY OF ROSENBERG"
 AND "STORM SEWER"

DEPRESSED
 PAVEMENT
 SURFACE
 TOP OF CURB

6" OR 12" REAR OPENING BASED
 UPON DEPTH (12" REAR OPENING)
 REQUIRES #3 BARS ON 6" CENTERS
 VERTICAL IN OPENING (DOWEL 3")



ELEVATION



NOTE: #3 DOWELS MIN. 6" LONG ON
 12" CENTERS EPOXY EACH IN PLACE

INLET TOP
 CROSS SECTION

NOTES:

1. INLET WALLS MAY BE EXTENDED USING PRECAST RISER SECTION.
2. INLET TOPS MUST BE SECURED TO THE INLET WALL USING # 6 DOWELS DRILLED AND GROUTED A MINIMUM DEPTH OF 5" INTO THE INLET WALL.
3. INLET BACKFILL SHALL BE CEMENT STABILIZED SAND TO THE TOP OF FIRST STAGE.
4. ALL STORM SEWER INLETS MUST HAVE A NO DUMPING STORM DRAIN MARKER [SEE DETAIL (D-109)] PLACED ON IT WHEN INSTALLED.



THE CITY OF ROSENBERG, FORT BEND COUNTY, TEXAS
 DEPARTMENT OF PUBLIC WORKS

MODIFIED TYPE H-2 INLET

DESIGN: CAK	CAD: STAFF	SCALE: NTS	DATE: 03/17	DRAWING: D-106b
----------------	---------------	---------------	----------------	--------------------