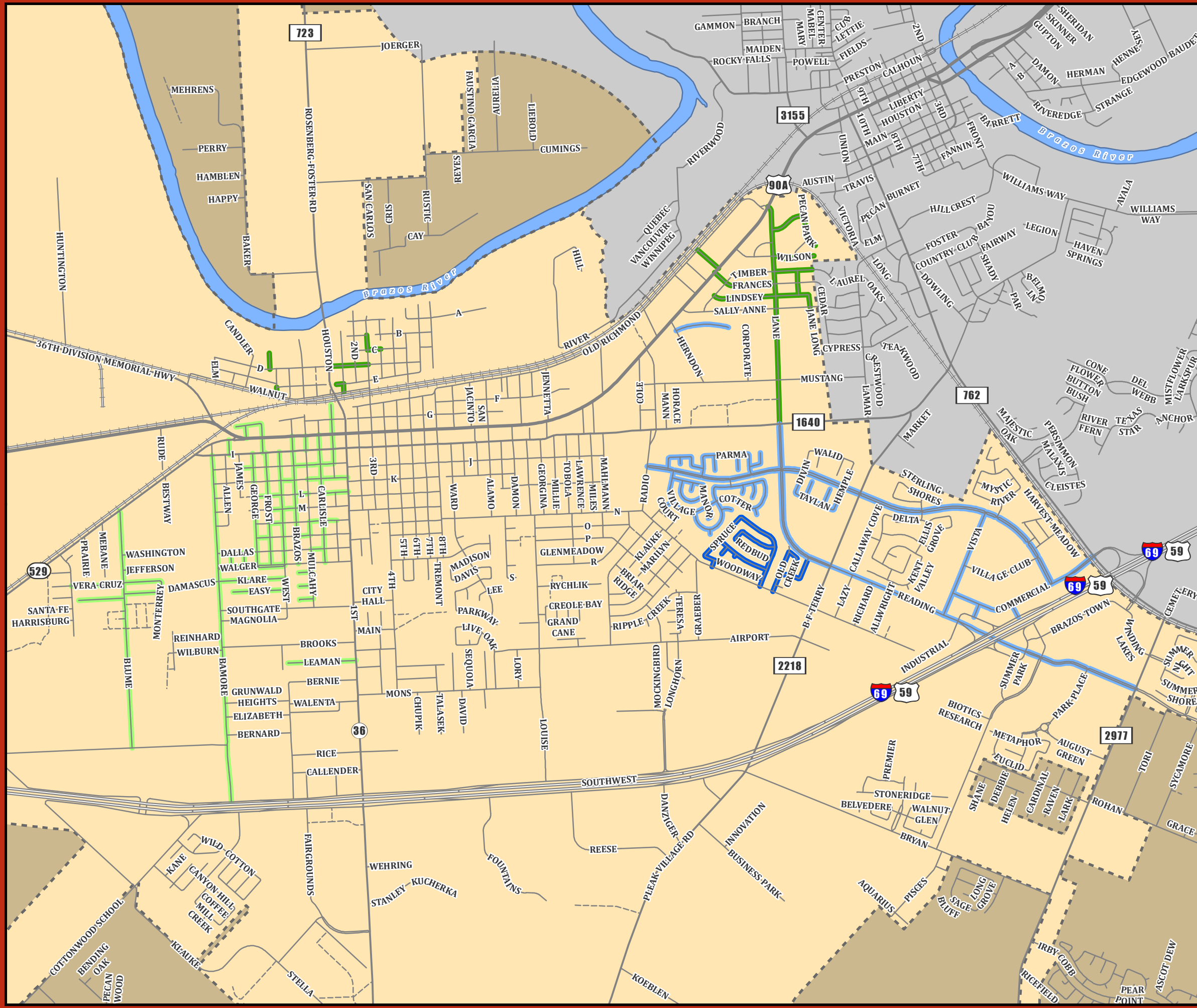


Street Sweeping - Week 3 November - February

City of Rosenberg, Texas



Street Sweeping Week 3

Base Zones

- Zone 5
- Zone 6

Alternate Zones

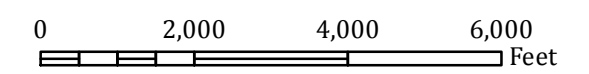
- Zone 1
- Zone 2

Basemap Features

- Interstate
- US Highway
- State Highway
- Public Road
- Private Road
- Railroad
- Brazos River
- Rosenberg City Limits
- Rosenberg ETJ



Scale:
1:30,000
or
1 Inch = 2,500 Feet



Created by: City of Rosenberg GIS - Cory Vardaman
Date Created: May 11, 2017
Original Size: 11" x 17"
R:\Maps\Custom\Public_Works\2017\StreetSweeping_AltZones_11x17.mxd

This product is for informational purposes and may not have been prepared for or be suitable for legal, engineering, or surveying purposes. It does not represent an on-the-ground survey and represents only the approximate relative location of geographic features.

