

ode8 (common)

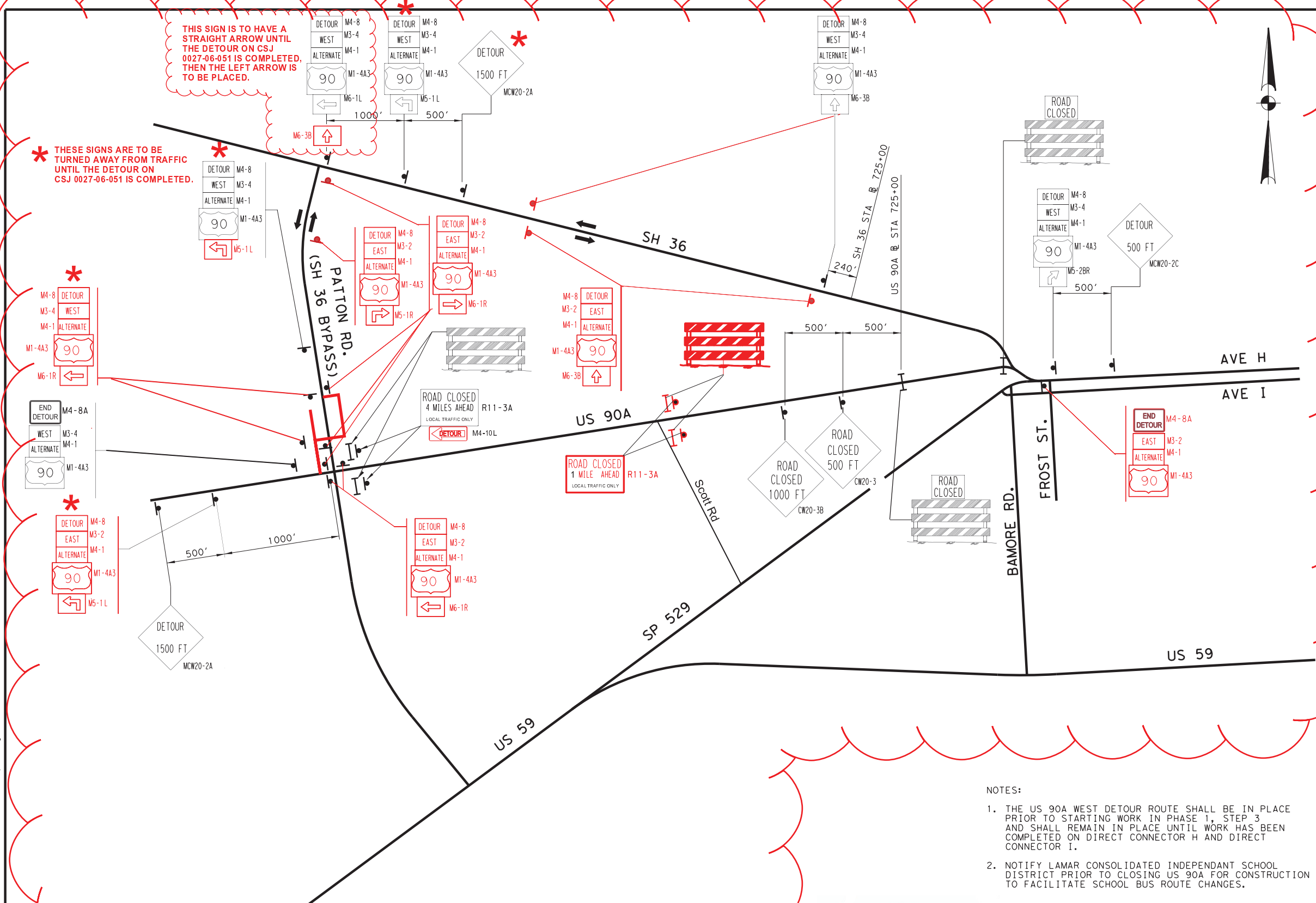
1/6/2017 11:55:01 AM R:\Active Projects\15300-01 SH 36 RR ROM\04-Desi\gn\9-Sheets\CADD\West\TCP\90aW-Tcp1300.dgn

THIS SIGN IS TO HAVE A STRAIGHT ARROW UNTIL THE DETOUR ON CSJ 0027-06-051 IS COMPLETED, THEN THE LEFT ARROW IS TO BE PLACED.

\* THESE SIGNS ARE TO BE TURNED AWAY FROM TRAFFIC UNTIL THE DETOUR ON CSJ 0027-06-051 IS COMPLETED.

LEGEND

- PERM CONSTRUCTION THIS PHASE
- TEMP CONSTRUCTION THIS PHASE
- DETOUR PAVEMENT REMOVED THIS PHASE
- BARRELS OR DRUMS
- PORTABLE SIGNS/ ARROW BOARD
- TYPE III BARRICADE
- GROUND MOUNTED SIGN
- CTB (P&P) W/TOP MOUNTED DELINEATORS
- LOW PROFILE CONC BARRIER
- SINGLE SLOPE CONC BARRIER
- CRASH CUSH ATTENUATOR
- PROP DIRECTION OF TRAFFIC
- EXIST DIRECTION OF TRAFFIC
- WK ZN PAV MRK REMOV (W) 4" (SLD)
- WK ZN PAV MRK REMOV (Y) 4" (SLD)
- WK ZN PAV MRK REMOV (W) 24" (SLD)
- WK ZN PAV MRK REMOV (Y) 24" (SLD)
- WK ZN PAV MRK REMOV (W) 4" (BRK)
- WK ZN PAV MRK WORD
- WK ZN PAV MRK ARROW



Revision 1

NOTES:

- THE US 90A WEST DETOUR ROUTE SHALL BE IN PLACE PRIOR TO STARTING WORK IN PHASE 1, STEP 3 AND SHALL REMAIN IN PLACE UNTIL WORK HAS BEEN COMPLETED ON DIRECT CONNECTOR H AND DIRECT CONNECTOR I.
- NOTIFY LAMAR CONSOLIDATED INDEPENDANT SCHOOL DISTRICT PRIOR TO CLOSING US 90A FOR CONSTRUCTION TO FACILITATE SCHOOL BUS ROUTE CHANGES.



01/10/2017  
Barry Vanderwalt P.E.



Jeremy D. Davis P.E.  
6/7/19  
\*Revision 1 only

1	6/7/19	Revised TCP Signs	
REV. NO.	DATE	DESCRIPTION	BY

**OMEGA ENGINEERS, INC.** 16360 PARK TEN PLACE, Ste. #325 HOUSTON TEXAS, 77084 OMEGAENGINEERS.COM TX PE Firm Reg. No. F-2147 P:281 647 9182 F:281 647 9184



US 90A CONTROL PLAN DETOUR LAYOUT PHASE 1 STEP 3

DSN: JTA	FED. RD. DIV. NO.:	STATE:	PROJECT NO.:	HIGHWAY NO.:
CK: SC	6	TEXAS		US90A, ETC
DRN: DDD	STATE DISTRICT:	COUNTY:	CONTROL NO. SECTION NO.:	JOB NO. SHEET NO.:
CK: SC	HOU	FORT BEND	0027 06	046, ETC 37

SHEET 1 OF 1